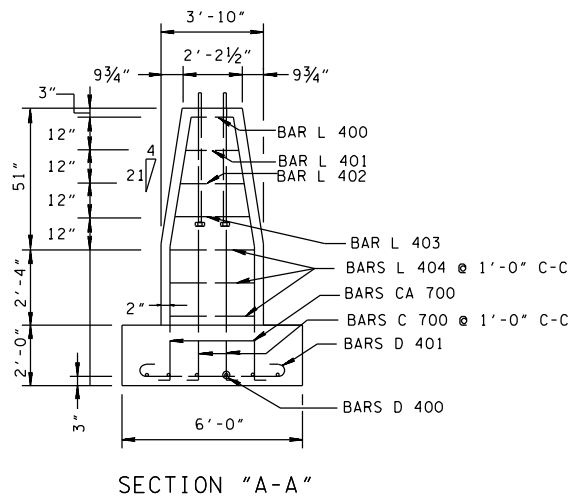
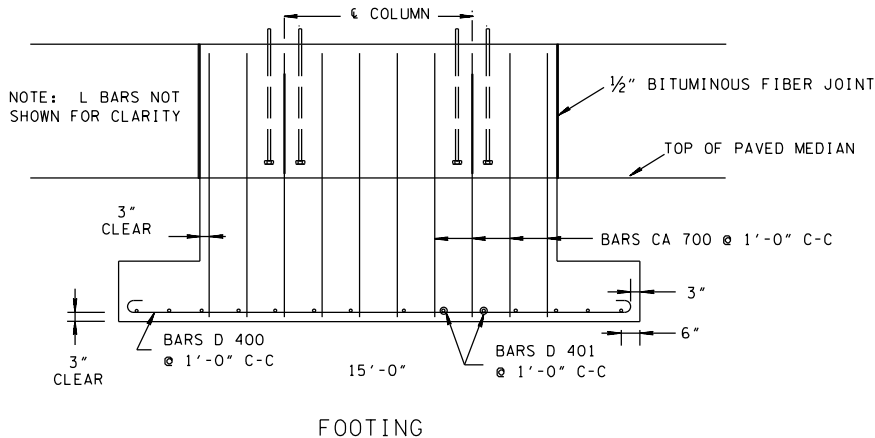
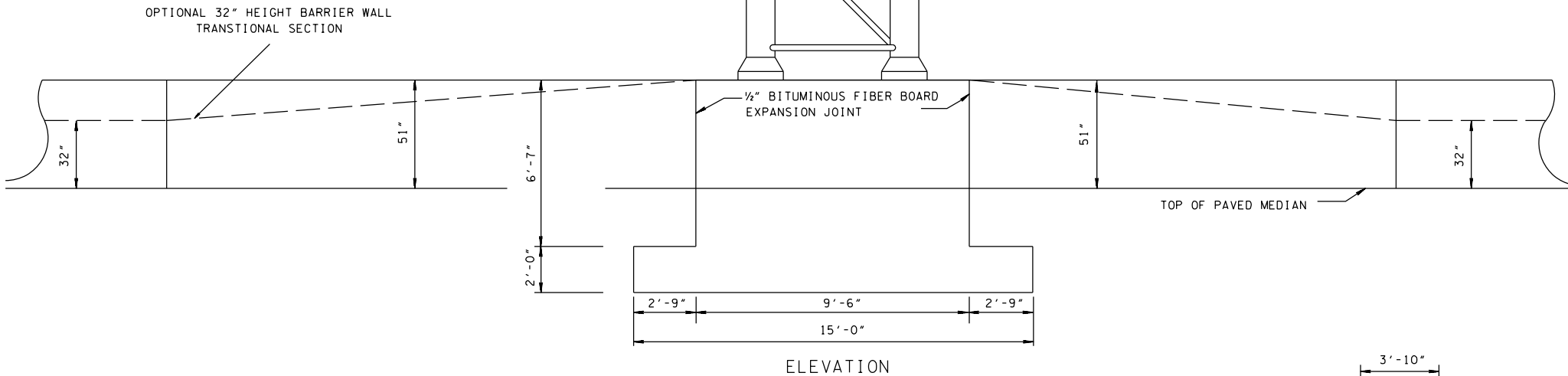
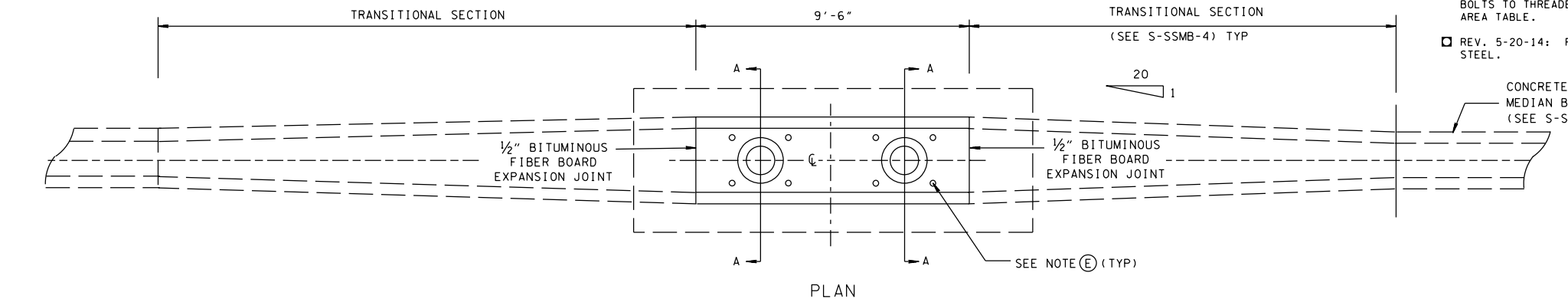
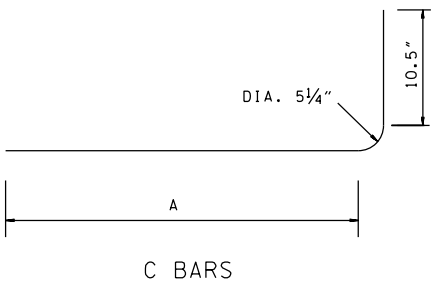
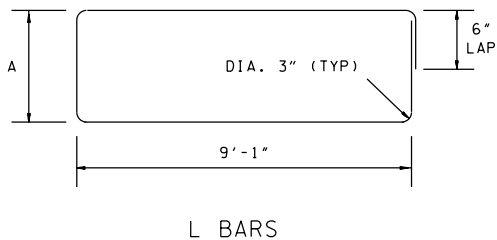
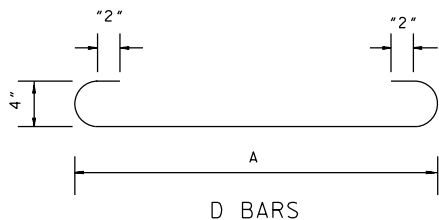


REQUIRED BEARING AREA FOR ANCHOR BOLT	
ANCHOR BOLT DIA(IN)	HEAD OR NUT AREA (SQ IN)
1"	1.800
1 1/4"	2.812
1 1/2"	4.050
1 3/4"	5.512
2"	7.199
2 1/4"	9.122
2 1/2"	11.249

ANCHOR BOLT DETAIL

ASTM F1554 ANCHOR BOLTS
(55KSI, HEADED OR THREADED/NUTTED) TO BE DESIGNED
BY SIGN STRUCTURE MANUFACTURER



BILL OF STEEL - PER FOOTING				
BAR	SIZE	NO. REQ'D.	DIM: "A"	LENGTH
C 700	7	4	8'-2"	9'-4"
CA 700	7	20		9'-7"
D 400	4	6	14'-6"	15'-6"
D 401	4	15	5'-6"	6'-6"
L 400	4	1	2'-1 1/2"	22'-7"
L 401	4	1	2'-4 1/4"	23'-5"
L 402	4	1	2'-8 3/4"	24'-1 1/2"
L 403	4	1	3'-1 3/8"	24'-10 3/4"
L 404	4	3	3'-8"	25'-8"

QUANTITIES	
CLASS "A" CONCRETE	13.3 C.Y.
REINFORCING STEEL	710 LB.

- #### GENERAL NOTES
- FINISHED CONCRETE SURFACES: CONCRETE FINISHING SHALL BE IN ACCORDANCE WITH SECTION 604.22 OF THE TENNESSEE STANDARD SPECIFICATIONS EXCEPT AS MODIFIED BY THE SPECIAL PROVISION NO. 130 REGARDING SECTION 604-CONCRETE STRUCTURES. A TEXTURED COATED FINISH SHALL BE USED IN LIEU OF A CLASS 2 FINISH. THE COLOR OF THE FINISH SHALL BE SIMILAR TO WHITE FEDERAL SPECIFICATION NO. 37778, A COLOR SAMPLE SHALL BE SUBMITTED TO THE MATERIALS AND TEST ENGINEER FOR APPROVAL.
 - EPOXY COATED DOWEL BARS WILL BE PERMITTED AS AN ALTERNATE TO PAINTED AND GREASED DOWEL BARS. THE EPOXY COATING SHALL BE AN APPROVED HIGH DENSITY POLYETHYLENE 17 MILS (± 2 MILS) BONDED TO THE BAR WITH AN APPROVED ADHESIVE 1 TO 8 MILS THICK (4 MILS NOMINAL).
 - IF A STORM DRAINAGE SYSTEM IS PLACED UNDER THE CENTER LINE OF THE MEDIAN BARRIER, THE PIPE SHALL BE SHIFTED HORIZONTALLY AROUND THE FOOTING.
 - OVERHEAD SIGN FOOTING COST IS TO BE INCLUDED IN THE COST OF THE OVERHEAD SIGN STRUCTURE.
 - LOCATION OF ANCHOR BOLTS TO BE DETERMINED IN THE FIELD BY THE ENGINEER TO MATCH SIGN STRUCTURE MANUFACTURERS SHOP DRAWING.
 - ANCHOR BOLTS, NUTS AND WASHERS ARE TO BE GALVANIZED STEEL.
 - CONCRETE: $F_c = 4000$ POUNDS PER SQUARE INCH AT 28 DAYS.
REINFORCING STEEL: ASTM A615, $F_y = 60,000$ POUNDS PER SQUARE INCH
ALL REINFORCEMENT IS TO BE INSTALLED AS DETAILED ON THIS DRAWING.

- REV. 12-4-13: CHANGED ANCHOR BOLTS TO THREADED. ADDED BEARING AREA TABLE.
- REV. 5-20-14: REVISED BILL OF STEEL.